

# Victorian Rider

⊗	DMC 931 Medium Antique Blue
◼	DMC 986 Very Dark Forest Green
◉	DMC 936 Very Dark Avocado Green
+	DMC 935 Dark Avocado Green
■	DMC 3011 Dark Khaki Green
◼	DMC 3781 Dark Mocha Brown
●	DMC 924 Very Dark Gray Green
⊗	DMC 890 Ultra Dark Pistachio Green
◊	DMC 319 Very Dark Pistachio Green
◼	DMC 469 Avocado Green
⊞	DMC 3363 Medium Pine Green
◼	DMC 3346 Hunter Green
⊕	DMC 611 Drab Brown
◼	DMC 610 Dark Drab Brown
◼	DMC 3790 Ultra Dark Beige Gray
↑	DMC 3012 Medium Khaki Green
△	DMC 3052 Medium Green Gray
⊞	DMC 3032 Medium Mocha Brown
◼	DMC 502 Blue Green
⊞	DMC 3364 Pine Green
⊞	DMC 451 Dark Shell Gray
▼	DMC 3053 Green Gray
⊞	DMC 3023 Light Brown Gray
◼	DMC 3864 Light Mocha Beige
◼	DMC 3782 Light Mocha Brown
◼	DMC 524 Very Light Fern Green
◼	DMC 966 Medium Baby Green
◼	DMC 453 Light Shell Gray
◼	DMC 564 Very Light Jade
◼	DMC 504 Very Light Blue Green
⊞	DMC 3033 Very Light Mocha Brown
⊞	DMC 822 Light Beige Gray
⊞	DMC 3770 Very Light Tawny

\* To work out the size of the finished article, take the number of stitches and divide it by the count of your fabric (e.g 14,16,18 count aida etc) to get the size in inches. Times it by 2.5 to get centimetres.

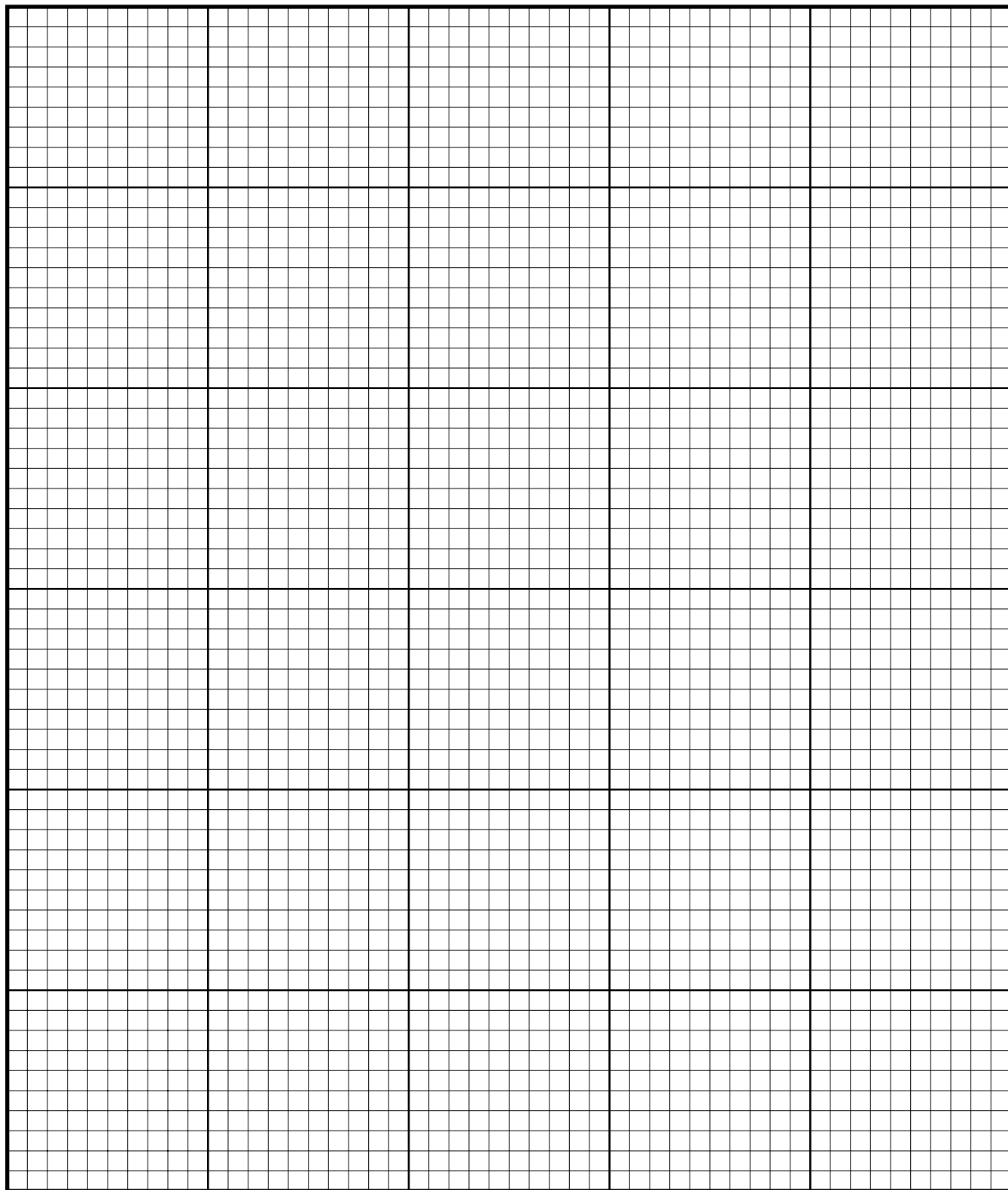
\* PLEASE NOTE: Our patterns are printed in a grid showing 10 x 10 stitches in each box. You may notice that the pages that run vertical have a maximum number of 9 rows at the top or bottom of a page. You are not missing a row or rows of stitches, this is the way our patterns print. It allows us to have larger print for your symbols.

\* You should begin at the centre of the pattern which has been marked by a circle for you. To find the centre of the pattern it is just a matter of counting the vertical and horizontal stitches and divide them by half. Where the two points meet that is the centre.

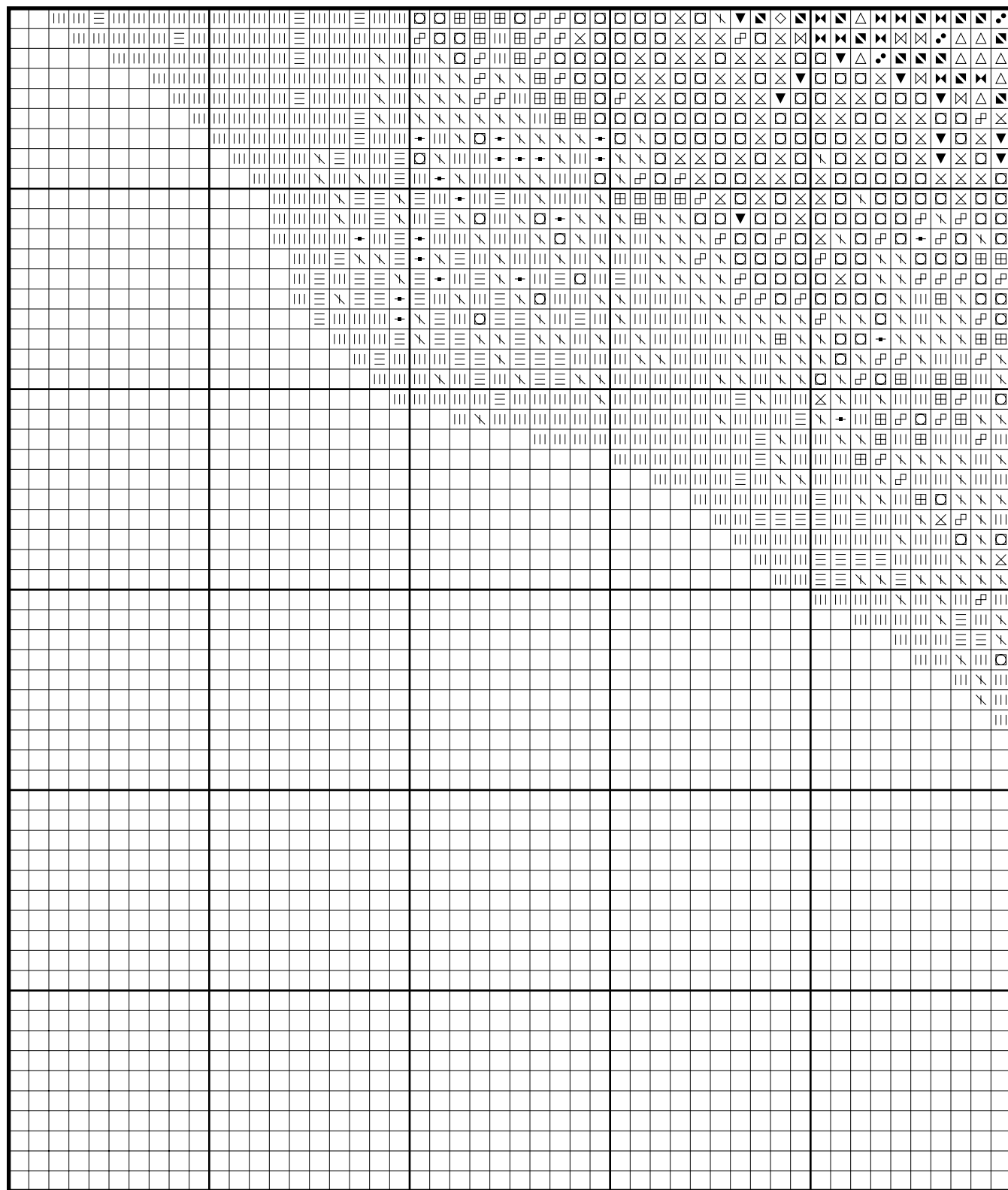
\* Pattern is for personal use only and is not to be sold, copied or redistributed in any form. Copyright of Artec Cross Stitch.

\* 206 stitches wide by 230 stitches high, 33 colours used

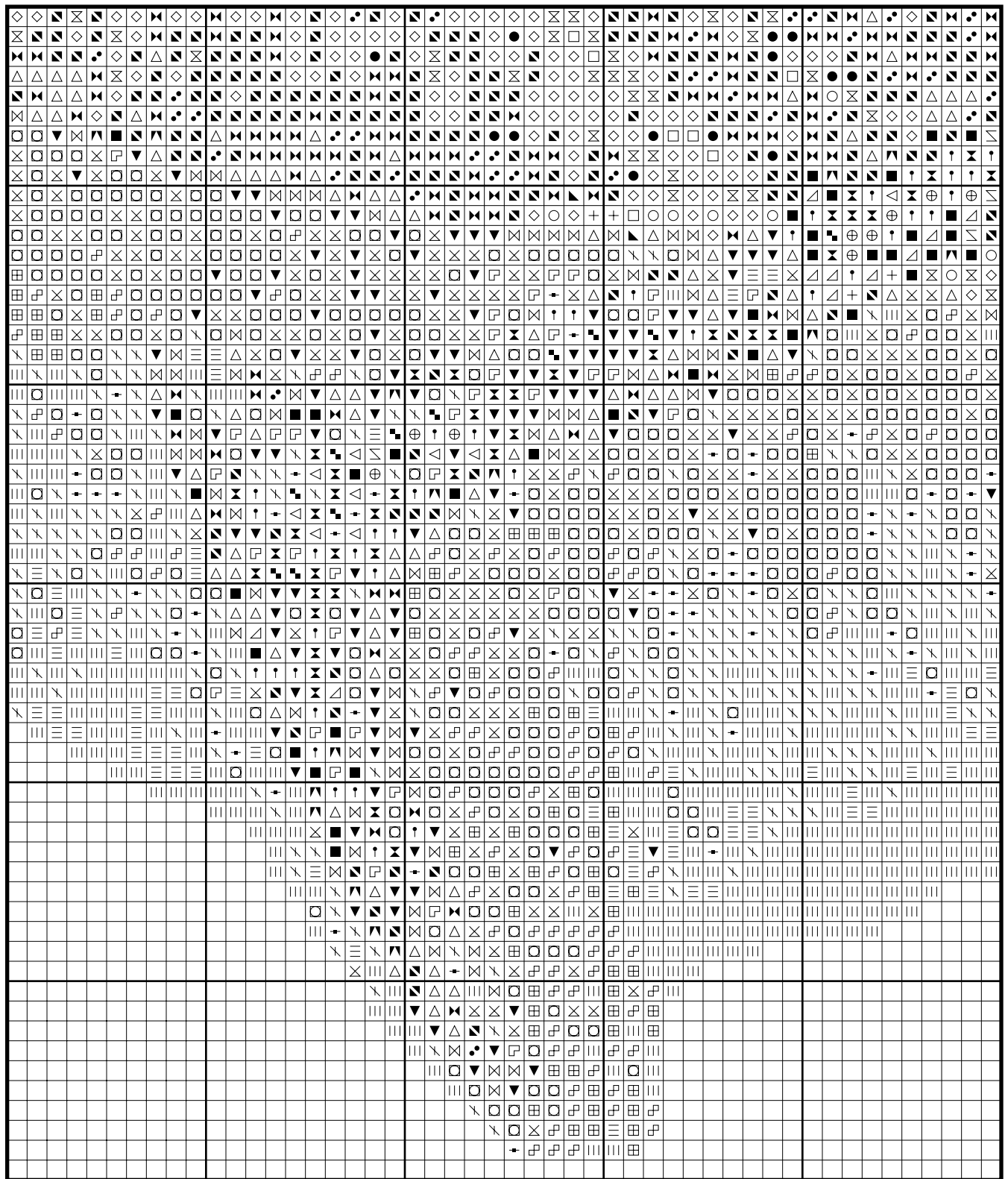
## Victorian Rider



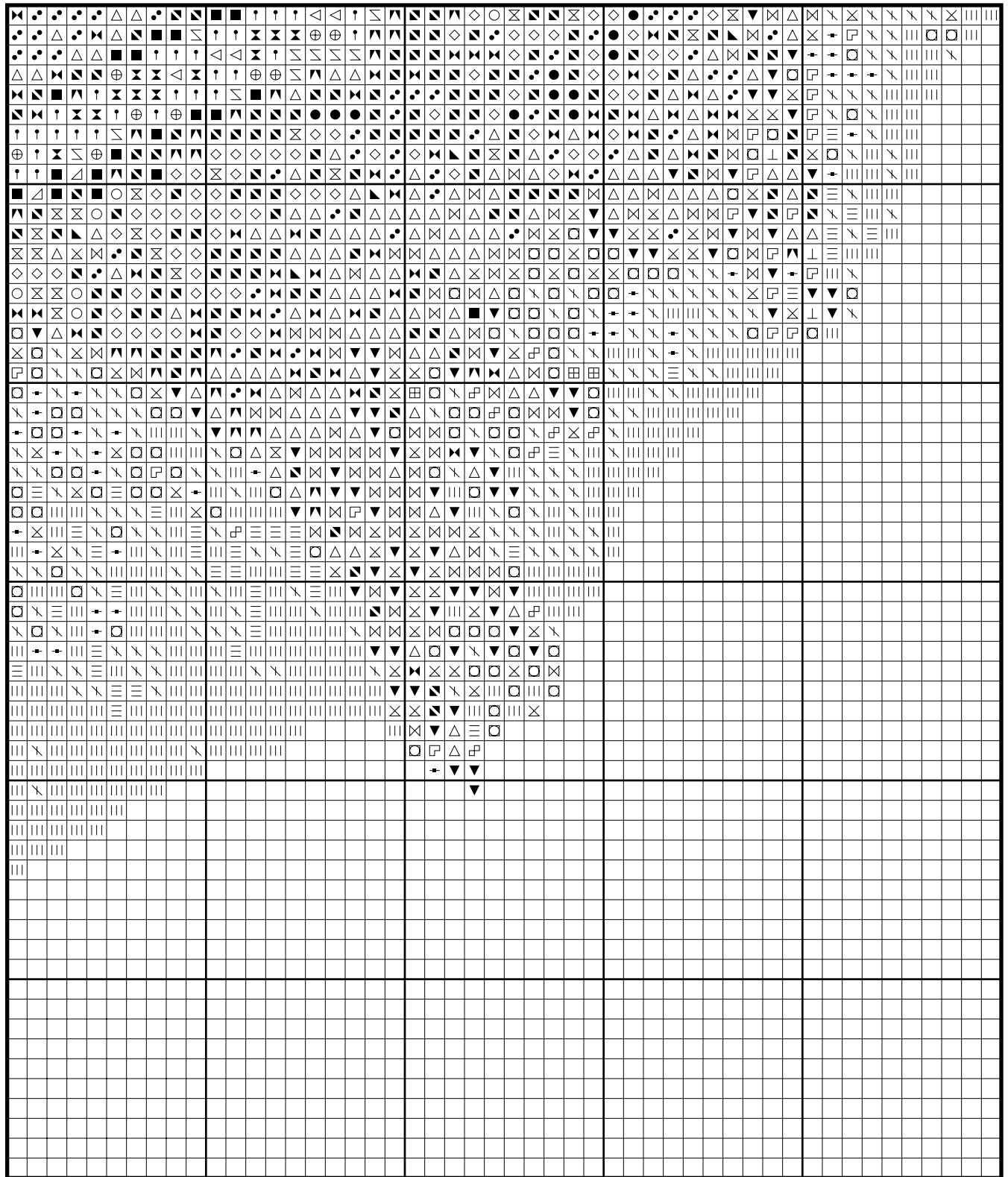
# Victorian Rider



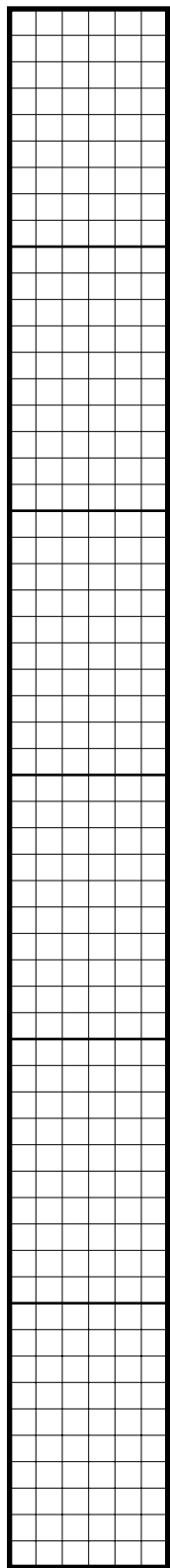
# Victorian Rider



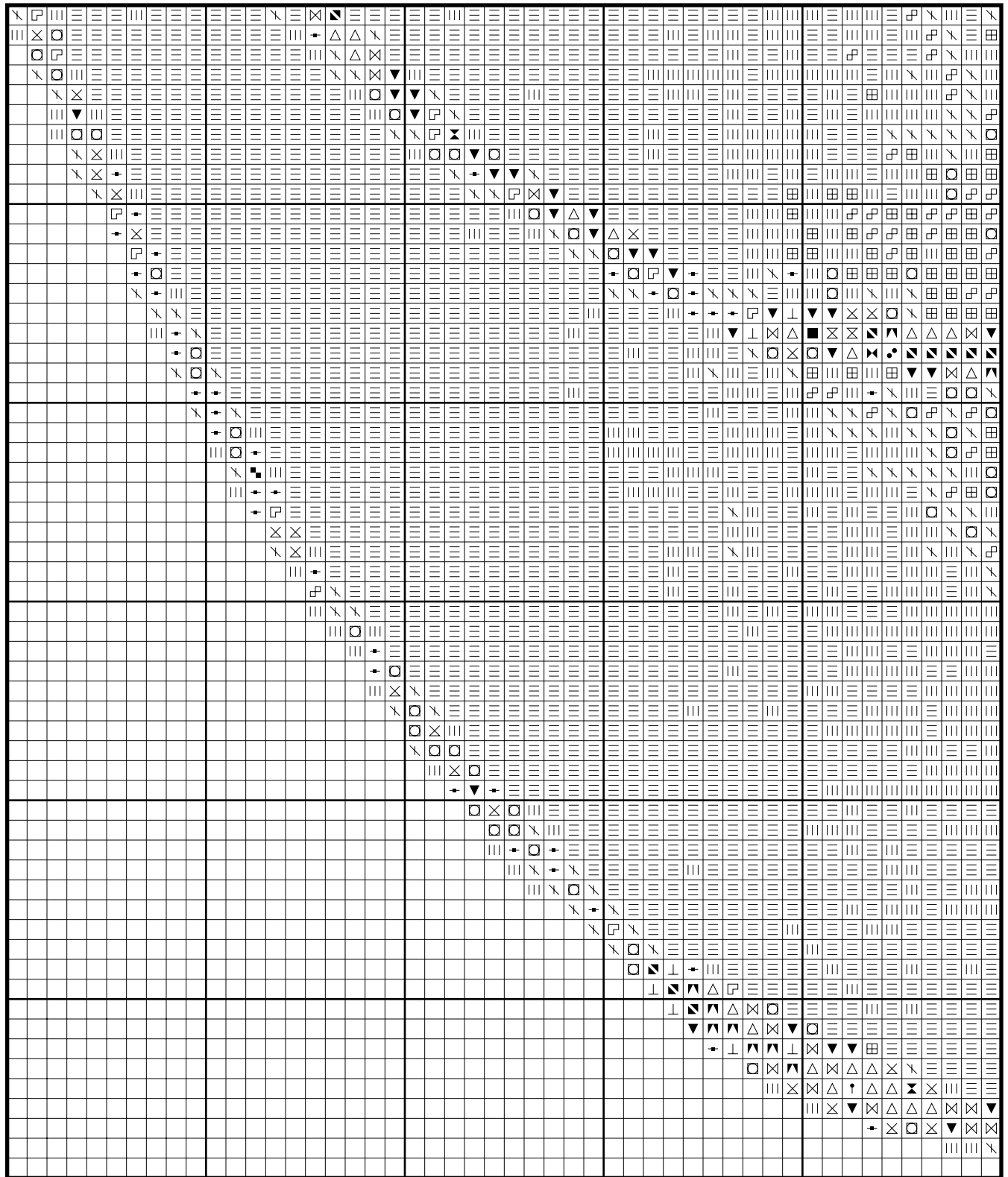
# Victorian Rider



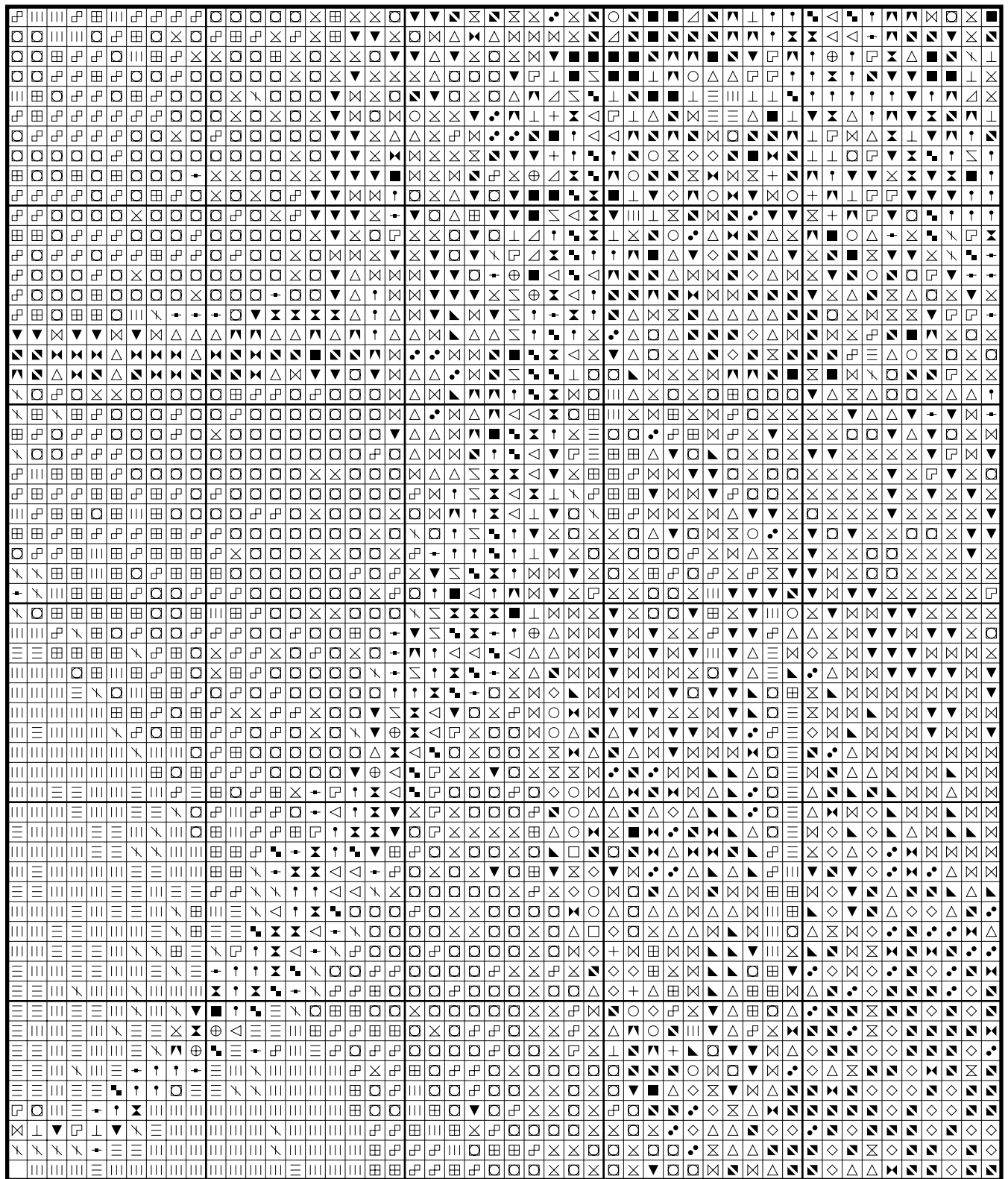
## Victorian Rider



# Victorian Rider

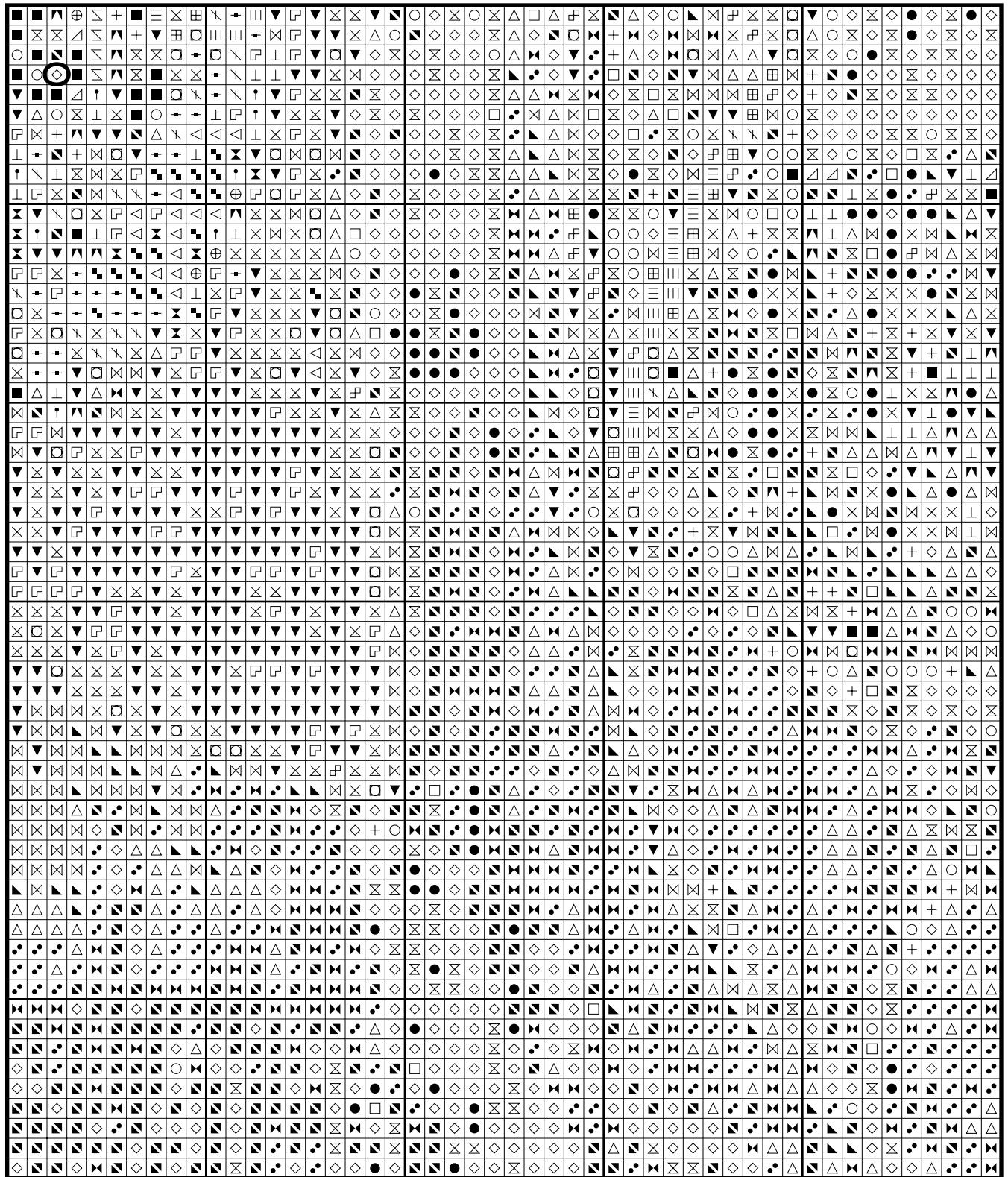


# Victorian Rider

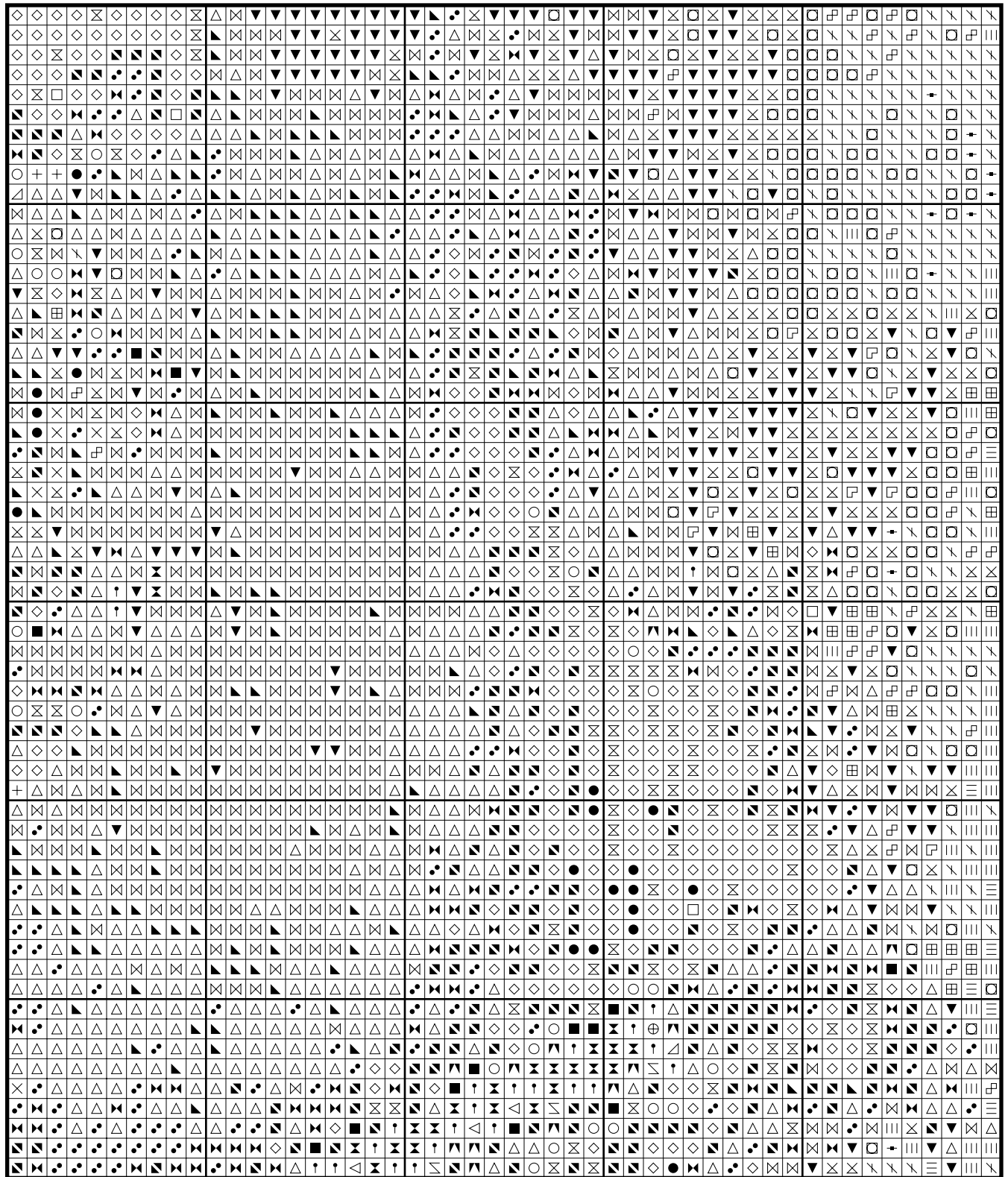




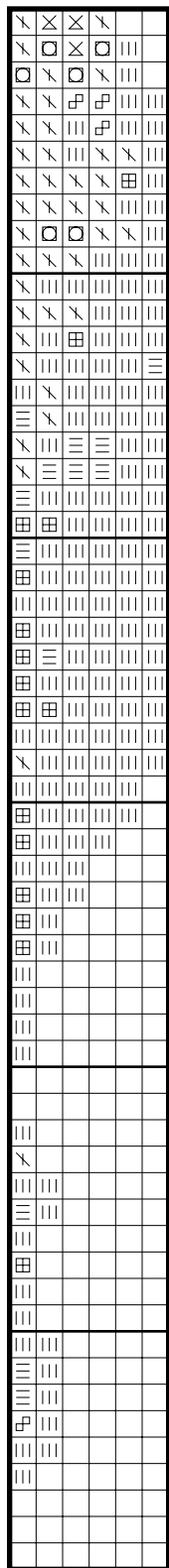
# Victorian Rider



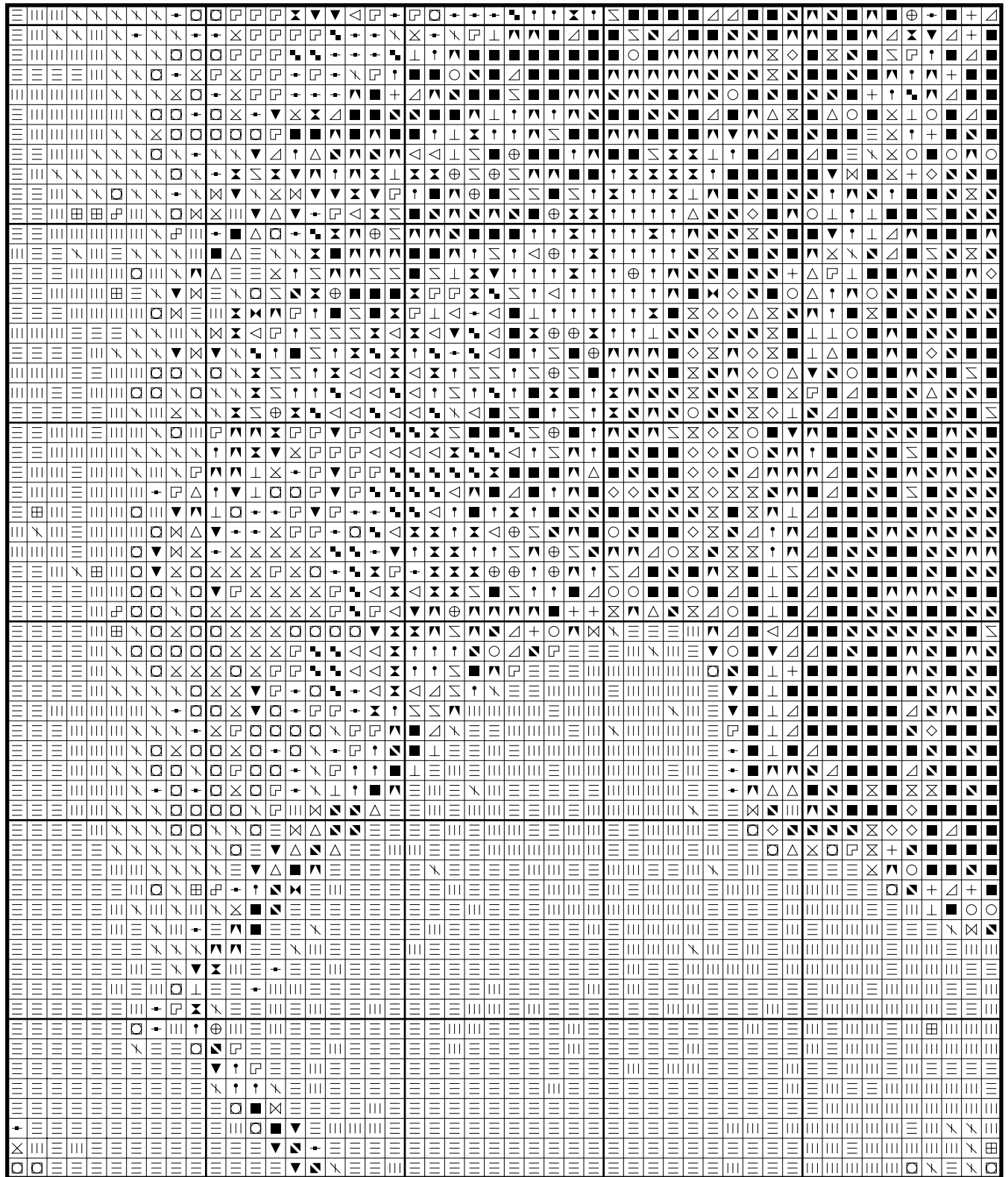
# Victorian Rider



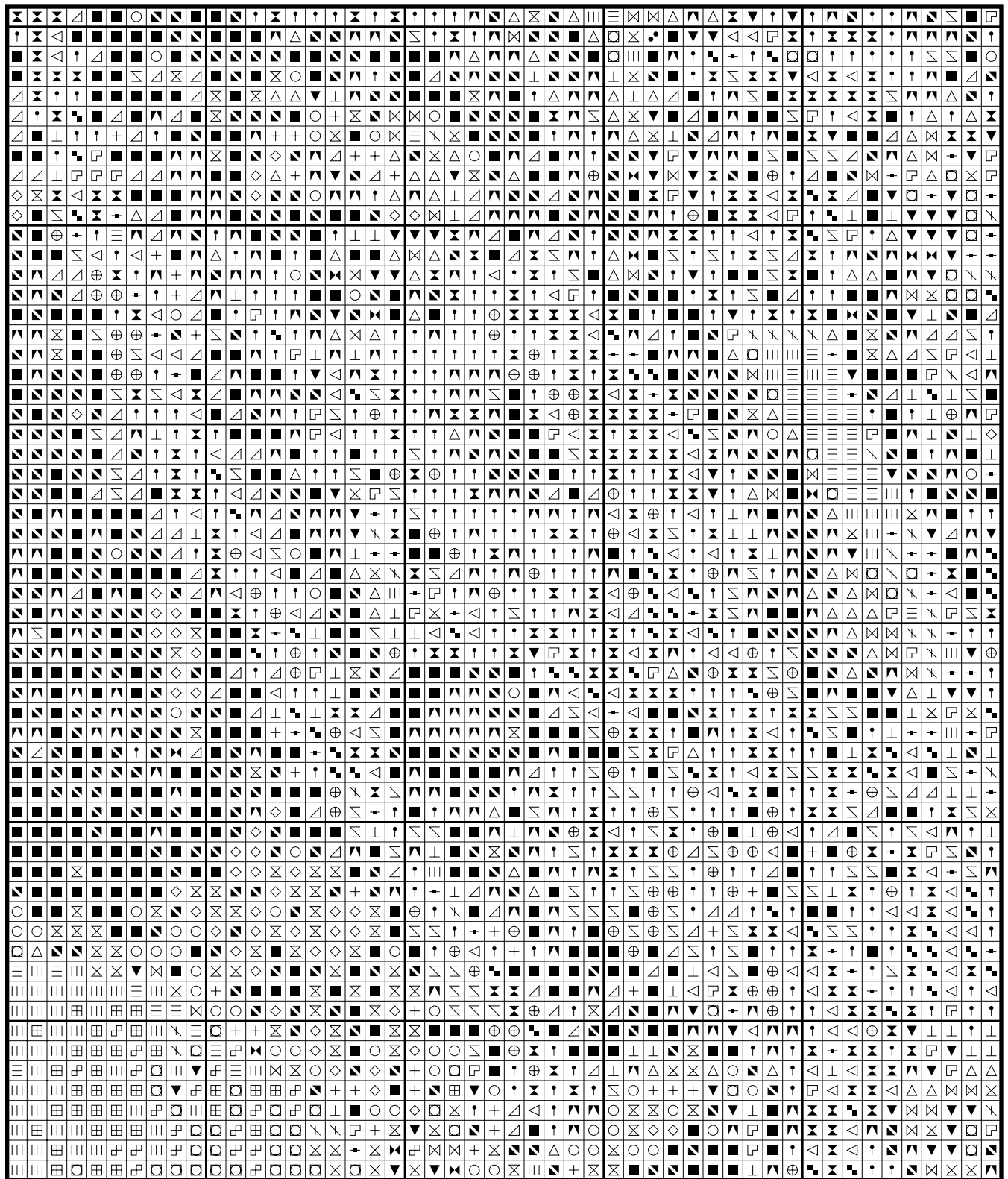
# Victorian Rider



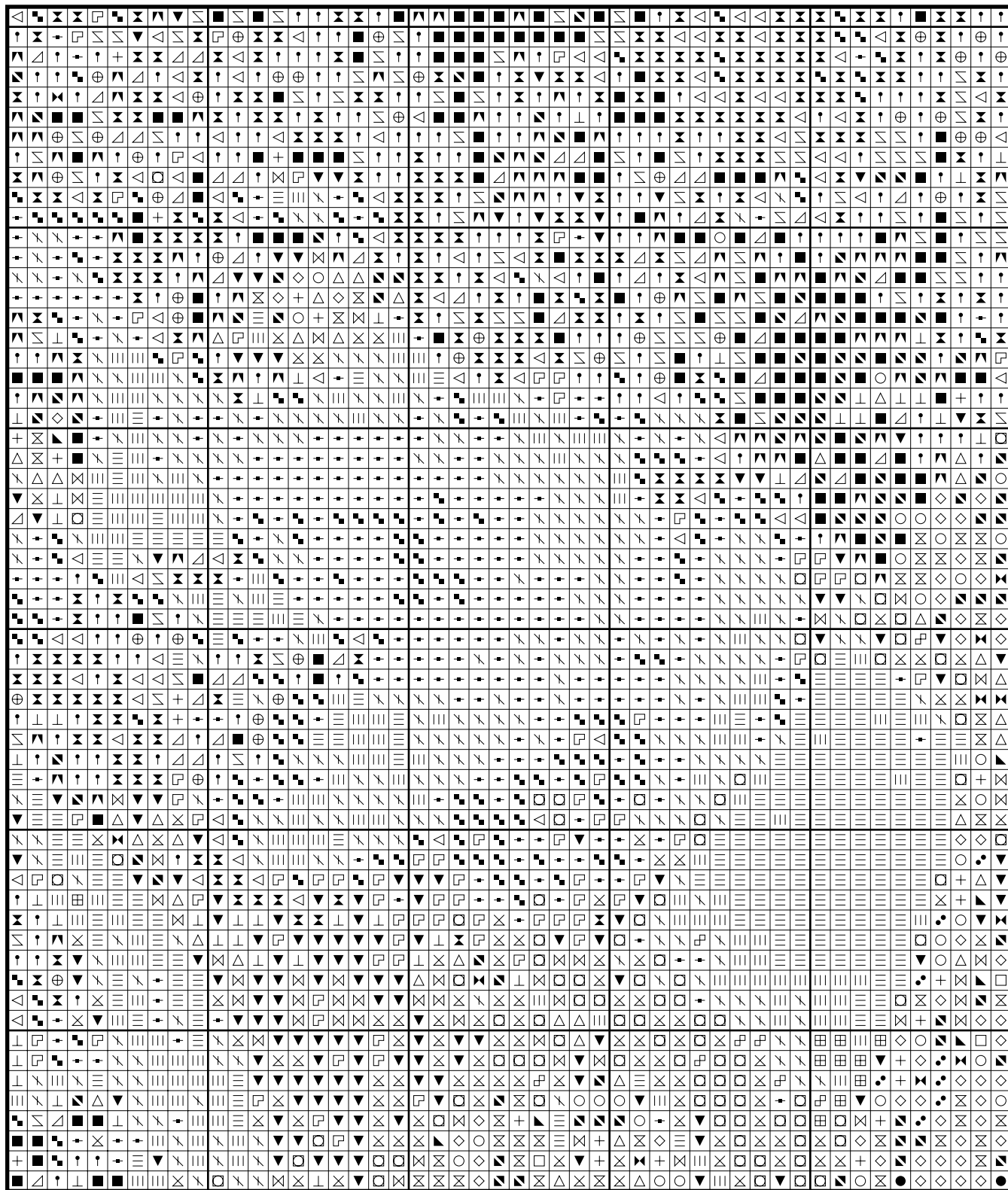
# Victorian Rider



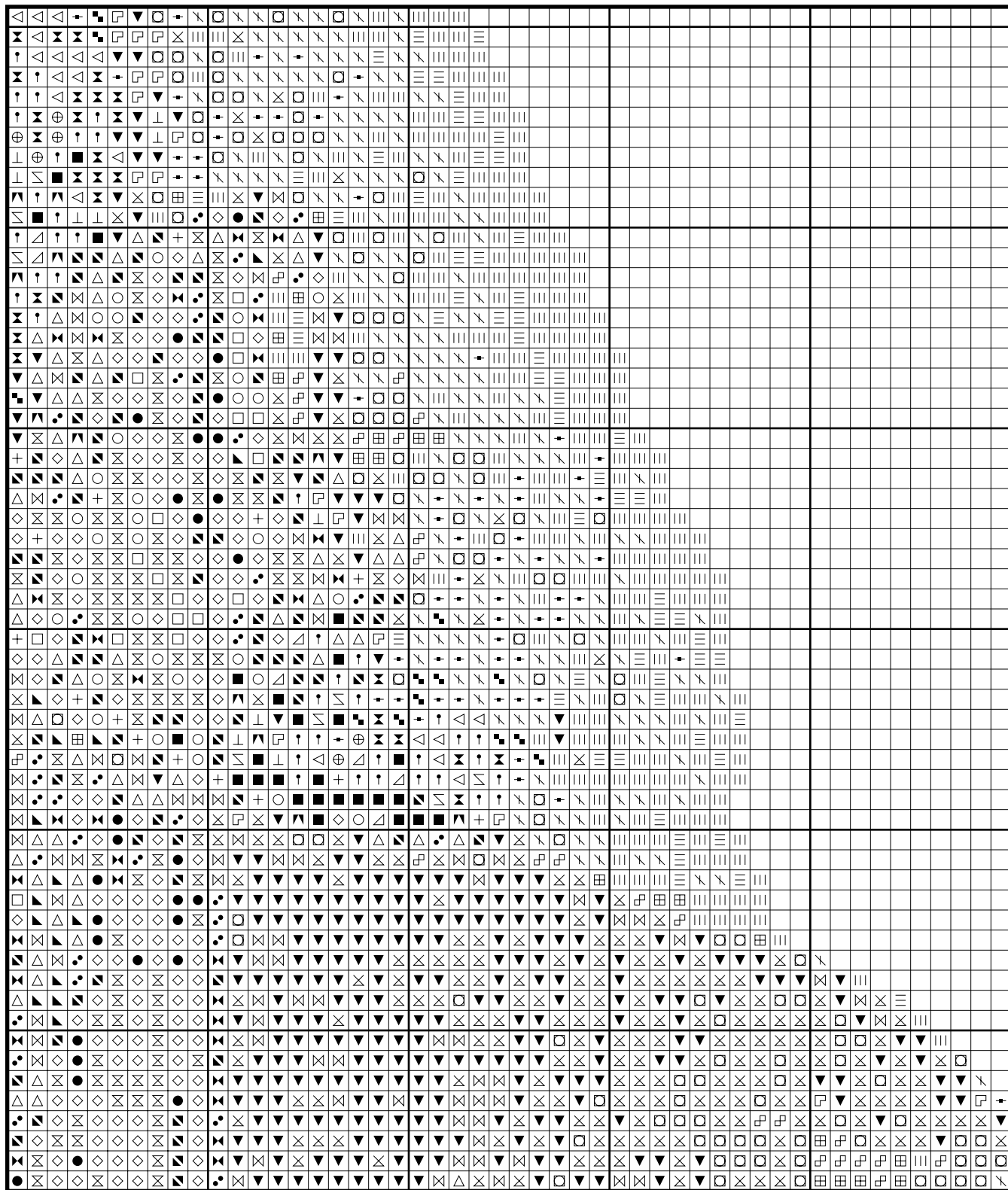
# Victorian Rider



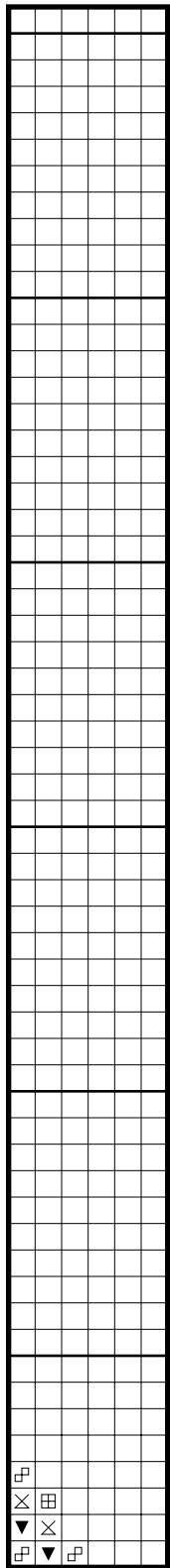
# Victorian Rider



# Victorian Rider

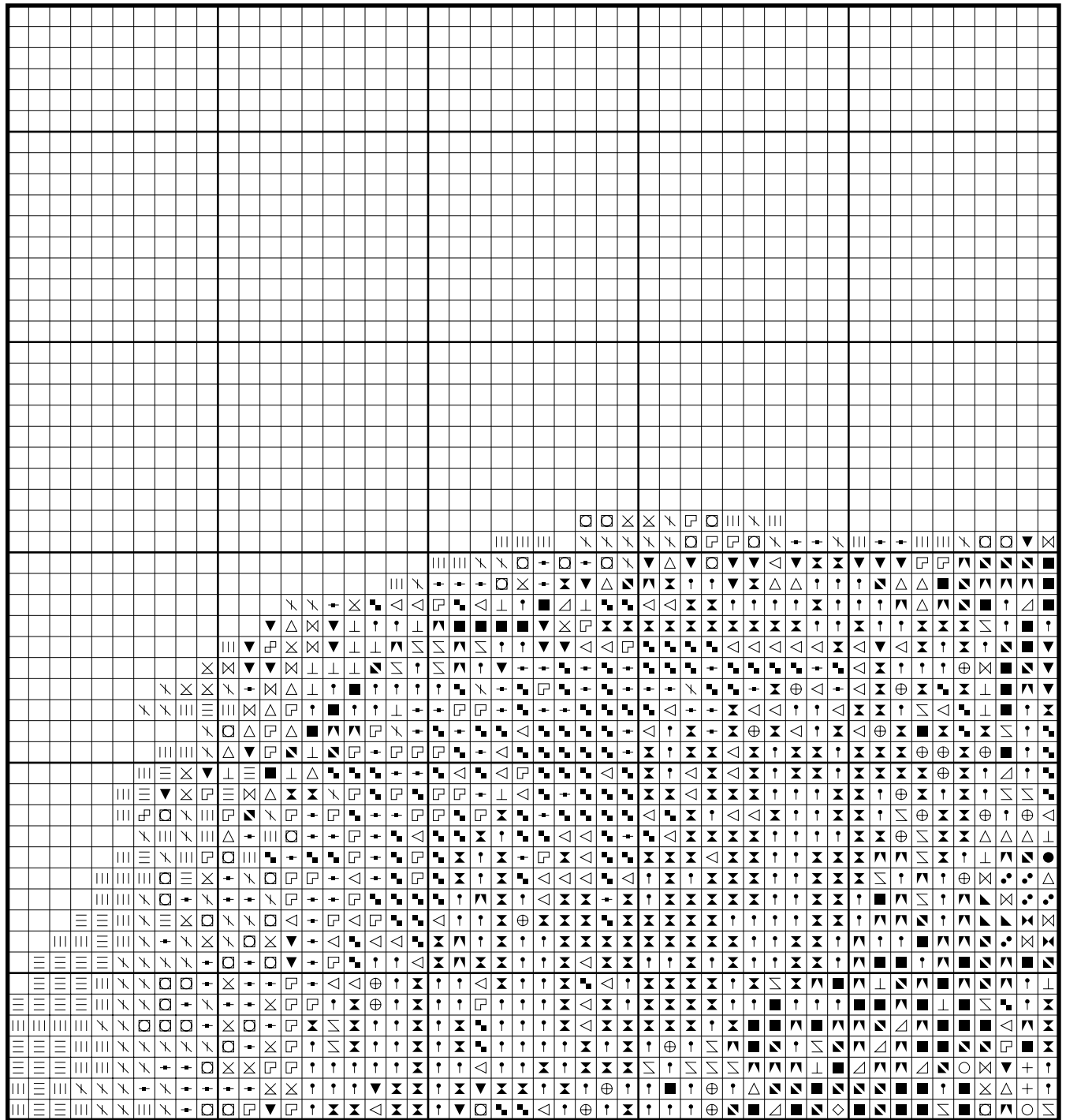


## Victorian Rider

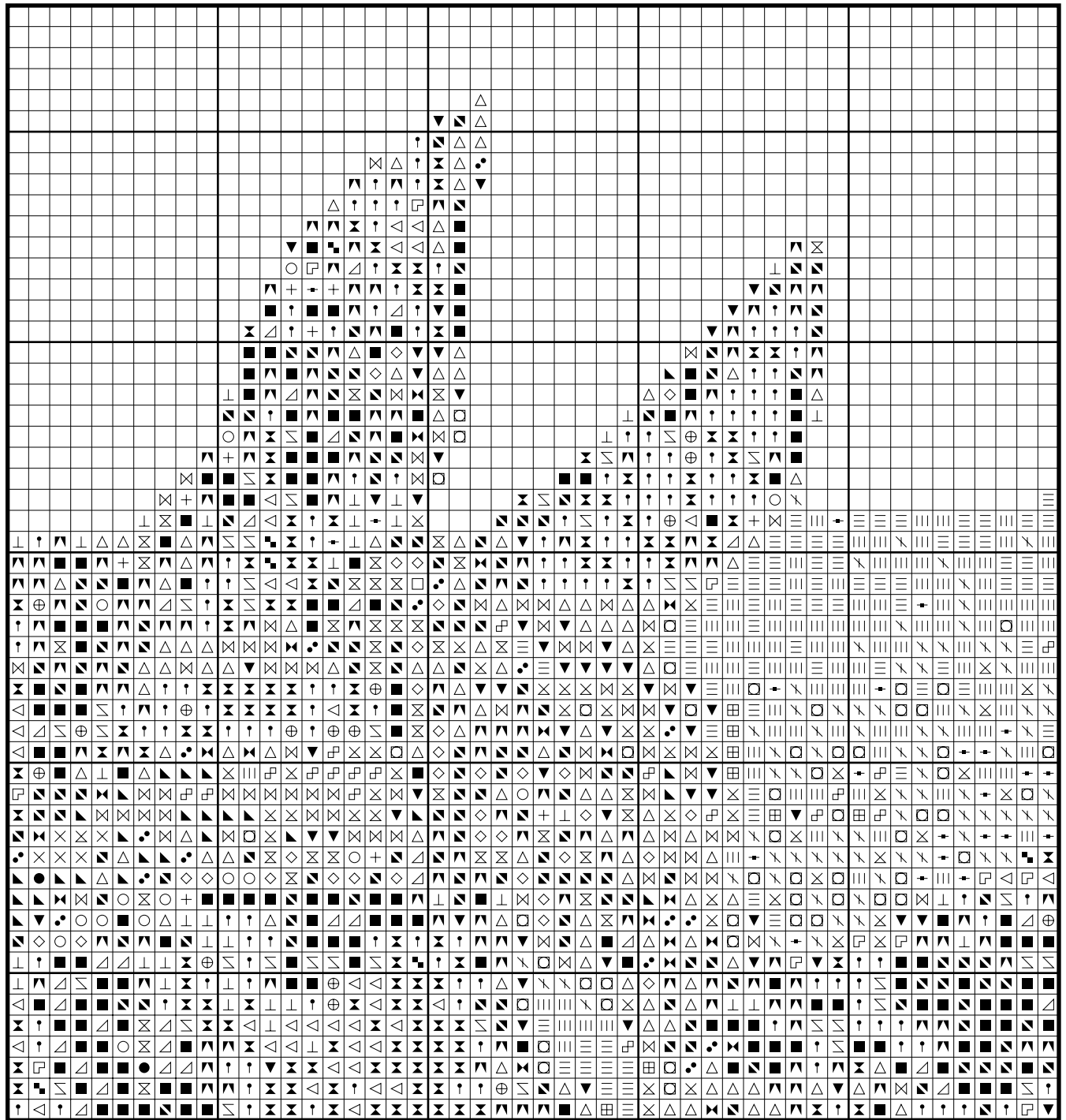




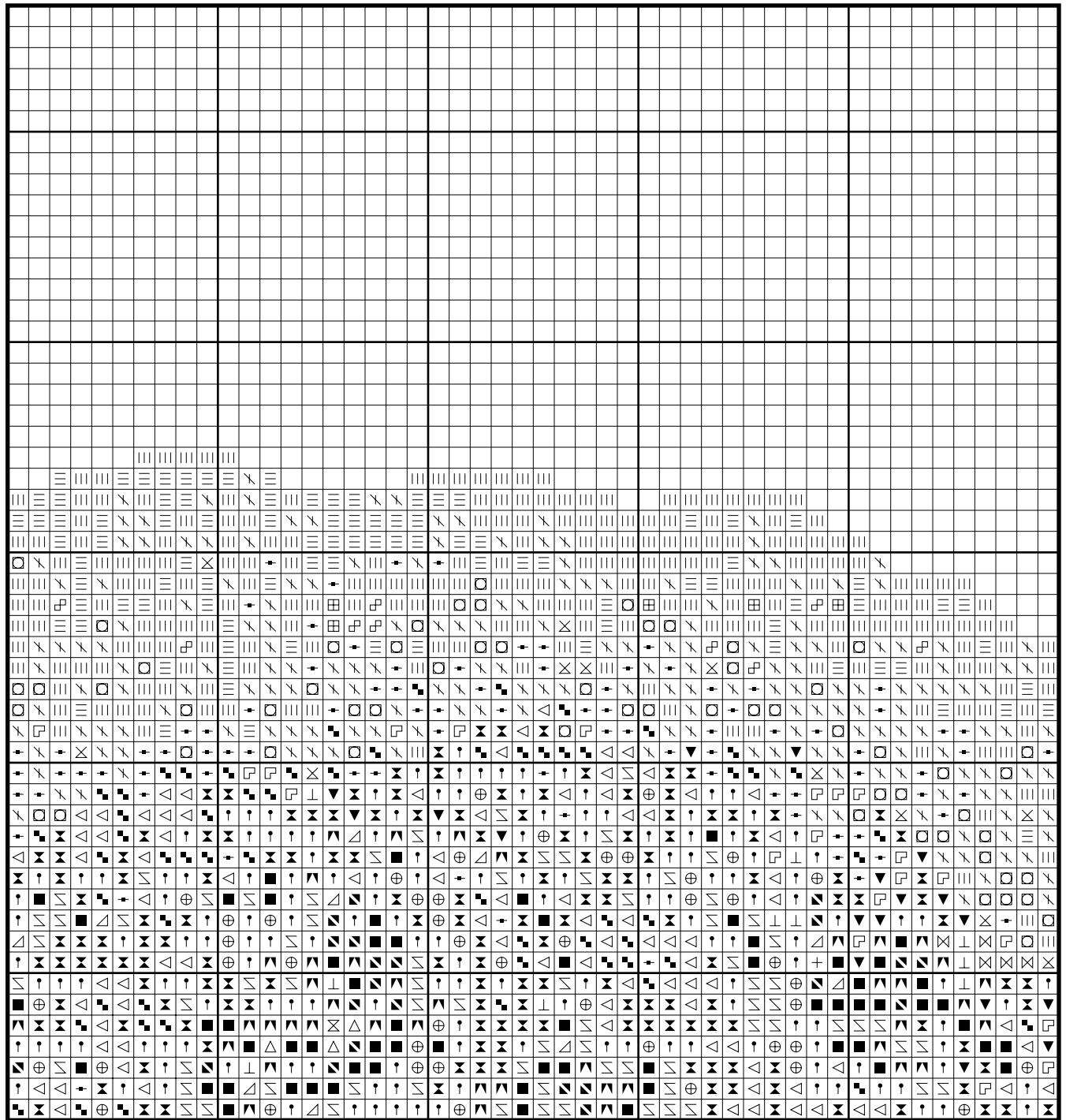
# Victorian Rider



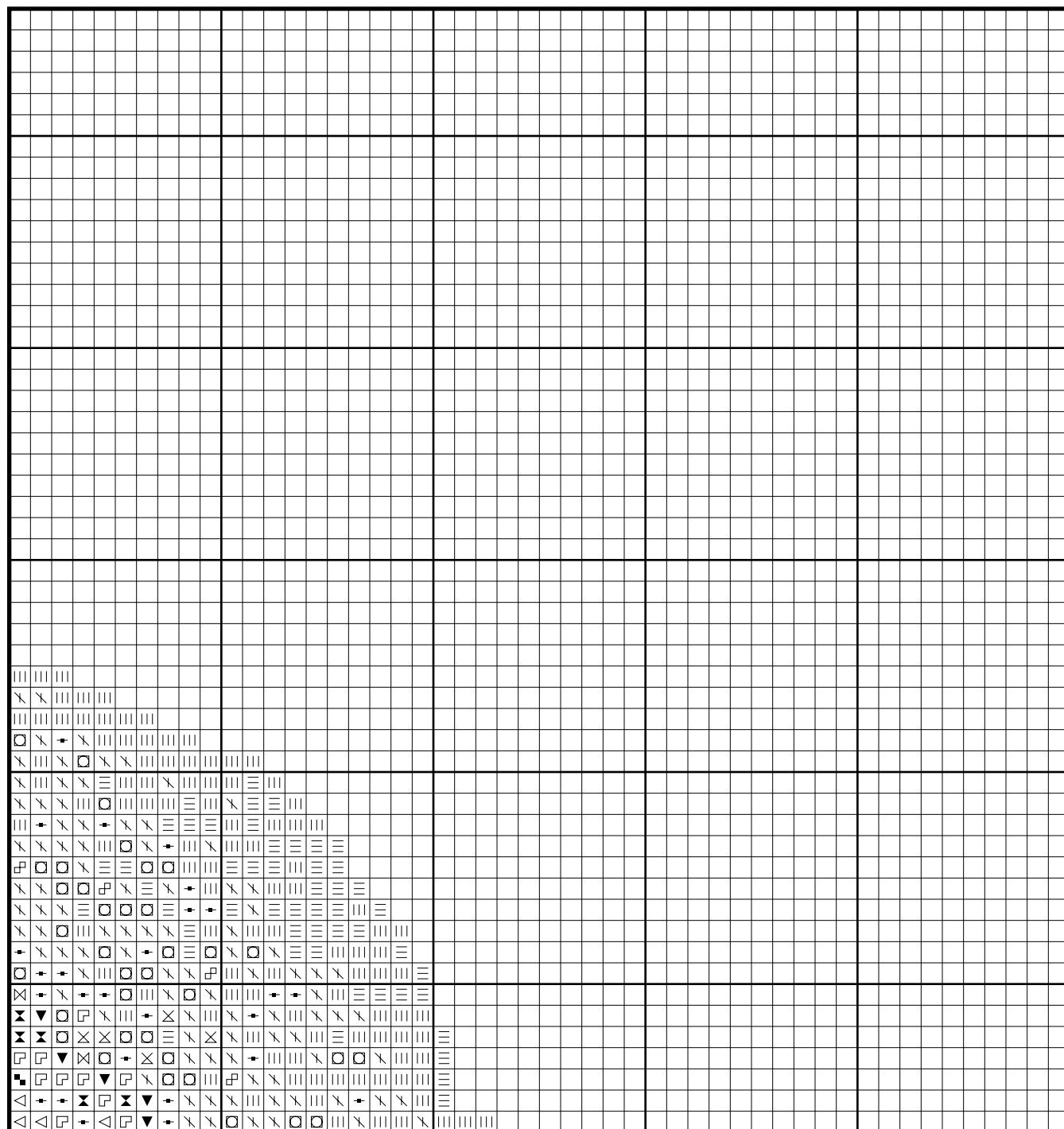
# Victorian Rider



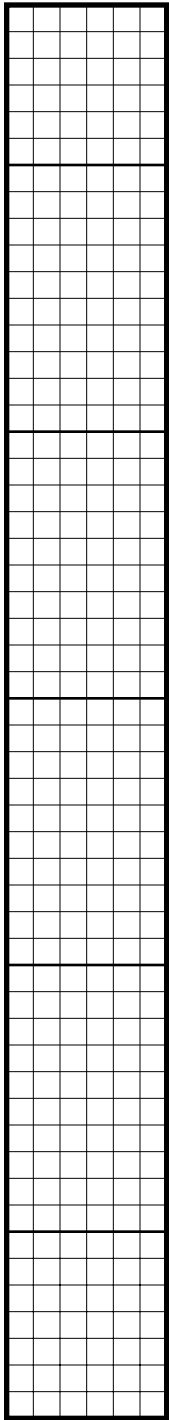
# Victorian Rider



# Victorian Rider



Victorian Rider



DMC 931 Medium Antique Blue: 31 stitches  
DMC 986 Very Dark Forest Green: 63 stitches  
DMC 936 Very Dark Avocado Green: 286 stitches  
DMC 935 Dark Avocado Green: 154 stitches  
DMC 3011 Dark Khaki Green: 1420 stitches  
DMC 3781 Dark Mocha Brown: 294 stitches  
DMC 924 Very Dark Gray Green: 153 stitches  
DMC 890 Ultra Dark Pistachio Green: 653 stitches  
DMC 319 Very Dark Pistachio Green: 1226 stitches  
DMC 469 Avocado Green: 2079 stitches  
DMC 3363 Medium Pine Green: 625 stitches  
DMC 3346 Hunter Green: 647 stitches  
DMC 611 Drab Brown: 271 stitches  
DMC 610 Dark Drab Brown: 457 stitches  
DMC 3790 Ultra Dark Beige Gray: 851 stitches  
DMC 3012 Medium Khaki Green: 1404 stitches  
DMC 3052 Medium Green Gray: 1419 stitches  
DMC 3032 Medium Mocha Brown: 1213 stitches  
DMC 502 Blue Green: 349 stitches  
DMC 3364 Pine Green: 1402 stitches  
DMC 451 Dark Shell Gray: 301 stitches  
DMC 3053 Green Gray: 1617 stitches  
DMC 3023 Light Brown Gray: 1443 stitches  
DMC 3864 Light Mocha Beige: 540 stitches  
DMC 3782 Light Mocha Brown: 523 stitches  
DMC 524 Very Light Fern Green: 493 stitches  
DMC 966 Medium Baby Green: 1987 stitches  
DMC 453 Light Shell Gray: 953 stitches  
DMC 564 Very Light Jade: 420 stitches  
DMC 504 Very Light Blue Green: 550 stitches  
DMC 3033 Very Light Mocha Brown: 2029 stitches  
DMC 822 Light Beige Gray: 2945 stitches  
DMC 3770 Very Light Tawny: 2719 stitches

\* Generally 30 stitches will use 1 metre of DMC floss.

PATTERN LAYOUT				
17	18	19	20	21
12	13	14	15	16
7	8	9	10	11
2	3	4	5	6

